

HITACHI



**HITACHI** | | | | | | | |

HITACHI AMERICA LTD., Home Electronics Division

P.O. Box 3900, Peoria, IL 61612

1-800-HITACHI

HITACHI.COM/TV

**ULTRAVISION**  
DIGITAL



Actual HDTV Picture

They say plasma television is just around the corner.  
Hitachi says, "Welcome to the corner."

Fifty-plus years after the first phosphors flickered across a living room television screen, it's become every TV viewer's dream: a flat widescreen television with a flawless picture to rival the local cinema, yet slim and compact enough to leave plenty of room for its owners, their furniture and their guests.

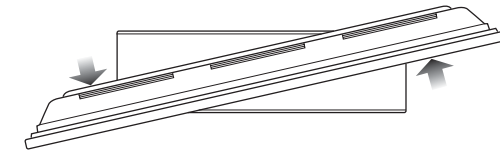
That dream is finally here. Hitachi, world leader in home electronics, is proud to introduce an entirely new category of television: Plasma Television for the home.

Whether it's the 42-inch or 32-inch model, the slim, sculptured HDTV display can simply be mounted on a wall or placed on a tabletop. Setup is amazingly simple, even for the technically-challenged — just a single cable from the receiver to the monitor followed by easy, logical, step-by-step on-screen instructions.

Most importantly, state-of-the-art ALiS technology and exclusive VirtualHD™ digital processing deliver the biggest, clearest, sharpest, brightest picture you could ever hope for. Or dream about.

## Everything works together. From your side of the room to ours.

It's slim. It's lightweight. Yet it's huge on enjoyment. The elegant two-piece design puts the emphasis on the picture, not the television. The brains of the operation — the AV Control Center — can be covertly tucked away out of sight with the rest of your system components.



**Hitachi's 32" Plasma Television swivels to accommodate optimum viewing from anywhere in the room.**

**Hitachi's 42" Plasma Television has detachable speakers for versatility with your home audio system.**



**The separate AV Control Center houses two tuners, the audio circuitry, and Hitachi's proprietary VirtualHD™ digital video processor. While only a single interface cable connects to the display, it provides all the inputs and outputs you need for connection to the rest of your Home Theater system.**



## A completely integrated television solution.

Hitachi's Plasma Television realizes another Home Theater dream: a single remote. Part magic, part genius, Hitachi's forward-thinking AV NET architecture presents the viewer with an intuitive user interface that's refreshingly logical and delightfully simple to use.



System components are operated by means of intelligent on-screen "soft keys." To watch a DVD for example, press the AV NET button on the remote. Then select from the on-screen choices. The TV automatically switches the input and displays the DVD control buttons right on the screen.



A single thumbstick control on the remote provides all you need to operate both the TV and system components. Use it to navigate the on-screen menus, press it to make a selection. Simply put, it couldn't be easier.



AV NET transfers digital commands from the on-screen soft keys to special IR "flashers" at your DVD player, VCR, A/V receiver or cable/satellite box. It's an ingenious solution to a common problem. And works with virtually any brand audio/video product.



Even system setup has been made simple. A few plain-language, on-screen prompts walk you, step by step, through the process. In no time, your system is configured and you're in complete control.



They say if you want something done right, do it yourself.

Funny, that's exactly what we say.

The practical reality behind that familiar aphorism is a fundamental part of the Hitachi philosophy. Every critical component in every plasma product we sell is designed by us. Engineered by us. Manufactured, assembled and tested by us.

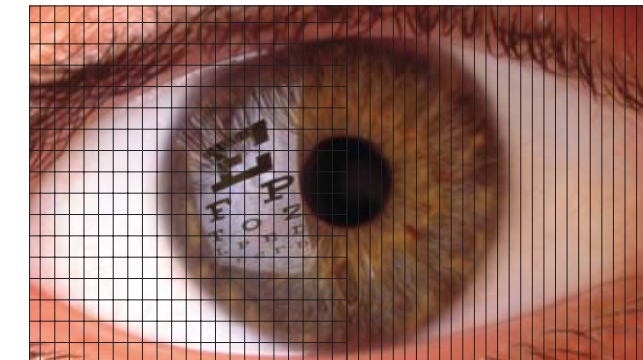
It's abundantly clear. Completely Hitachi is no idle claim.

Much of our technology is shared from product to product, allowing the most discriminating customers to choose from a fully integrated line of products that offer inspired design and state-of-the-art performance, with refreshing simplicity and ease of use.

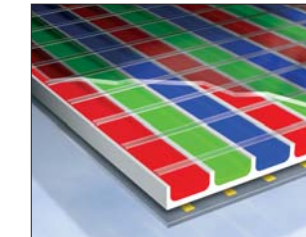
Now that the promise of Hitachi Plasma Television has arrived, we're committed to making it the television standard for years to come. Thanks to our partnership in one of the premiere plasma research and development facilities in the world, soon everyone with a couch and a dream will have an entertainment experience they can't wait to come home to.



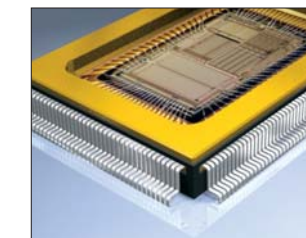
The way conventional plasma displays are designed creates a highly-visible grid pattern across the picture. It's not how you view the world. And it's not how you should view your television.



Because a plasma system used for Home Theater must be designed specifically for the display of video and movies, Hitachi utilizes ALiS (Alternate Lighting of Surfaces) — a complete rethinking of the basic plasma display technology that delivers a smooth, seamless video image, free of an annoying pattern.



Instead of a rigid grid of pixels, ALiS technology uses continuous vertical channels of phosphor material for the smoothest, brightest, sharpest picture ever in a plasma display.



VirtualHD upconverts the resolution of the conventional video signal to HD specifications. More picture information means smoother definition of curved and diagonal edges.

## Features and Specifications



Audio Video Control Center (AVC20)



Optional Floor Stands  
SPD32 (32") / SPD42 (42")



32" Plasma TV  
(32HDT20)



42" Plasma TV  
(42HDT20)

### UltraVision Digital Plasma TV 16:9 HDTV Monitor and AV Control Center (AVC20)



#### Convenience

- Two-Piece Television System
  - 2 NTSC Tuner Audio Video Control (AVC) Center
  - Slim-Design Plasma Display Panel
  - 20° Swivel Stand (32" model only)
  - Elegant One-Wire AVC Connection
  - Silent Operation without Fans
- New Easy-to-Use On-Screen Menu Control (3-Language)
- New AV NET System Control
  - IR System Controls up to 4 Hidden Components
  - Easy-to-Use On-Screen Commands
  - Set-Up Wizard Guides Installation
- Digital Window™ Two-Tuner Split Screen<sup>1</sup>

- Digital Window™ HD Split Screen<sup>2</sup>
- Digital Window™ Picture-in-Picture<sup>3</sup>
- Illuminated and Preprogrammed Remote Control
- Automatic Power On/Off via Signal Detection
- Menu Control Keys Accessible from AVC Center
- Picture Enhancement for RGB Sources
- Input Signal Identification

#### Picture

- 1080i HDTV Format<sup>4</sup>
- ALiS (Alternate Lighting of Surfaces) Technology
- New VirtualHD™
  - 1080i/720p/540p/480p/480i Processing
  - 3:2 Film Correction
  - 8 Point Video Motion Detection

- High-Contrast MBP Pure-Color Glass Shield
- Wide Viewing Angle: More than 160°
- 3 Color Temperature Presets: Standard (6500K), Medium (7500K), Cool (9300K)
- Multiple Screen Modes<sup>5</sup> (4:3 Expanded, 4:3 Standard, 4:3 Zoom1, 4:3 Zoom2, 16:9 Standard)
- 4MB 10-bit 3D Y/C Comb Filter
- Picture Modes (News, Sports, Movies, Music)
- Computer Display: VGA, (SVGA, XGA, SXGA -scaled)

#### Sound

- Dual L&R 3" Woofers with 1" Silk Dome Tweeter (42HDT20 only)
- MTS Stereo/SAP with dbx™

- TruBass™ and Matrix Surround
- Power Output
  - 10W + 10W (42HDT20)
  - 7W + 7W (32HDT20)
- Soft Mute (50% & 100%)

#### Inputs/Outputs

<b>Audio Video Control Center</b>	
Inputs .....	RGB1, RGB2, VIDEO 1-5
Component Video Y, Pb, Pr .....	2 Sets (1080i, 720p, 540p, 480p, 480i)
RGB – Dsub-15 .....	1
RGB – Digital .....	1
Composite Video .....	4
S-Video .....	3
Antenna (RF) Inputs .....	2
Converter Box Output .....	1

Audio Output .....	1
Monitor Output .....	1
Headphone Output .....	1
IR Mouse Output .....	2

#### Specifications

Multi-Scanning .....	24-80KHz (h), 50-75Hz (v)
Pixel Pitch	
42HDT20 .....	0.90 (h) x 0.51 (v) mm
32HDT20 .....	0.84 (h) x 0.39 (v) mm
Display Resolution	
42HDT20 .....	1024x1024
32HDT20 .....	852x1024
FCC class .....	B for Consumer Use
Power Requirements .....	108-132V, 60Hz
Power Consumption	
42HDT20 .....	350W
32HDT20 .....	230W

#### Dimensions

<b>42" Monitor (without tabletop stand)</b>	
Width .....	40-9/16" (1030mm)
Height .....	25-1/16" (636mm)
Depth .....	3-9/16" (89mm)
Weight (w/tabletop stand & spkrs.) .....	86 lbs. (38.8kg)
<b>32" Monitor (without tabletop stand)</b>	
Width .....	38-3/8" (974mm)
Height .....	19-3/4" (501mm)
Depth .....	3-9/16" (89mm)
Weight (w/tabletop stand) .....	58 lbs. (26.8kg)
<b>Audio Video Control Center</b>	
Width .....	16-15/16" (430mm)
Height .....	4-11/16" (120mm)
Depth .....	11-1/16" (280mm)
Weight .....	9 lbs. (4kg)

#### Supplied Accessories

- Illuminated Preprogrammed Remote Control
- Batteries
- IR Mouse Cables with IR Blasters (2)
- AC Cable 6ft. (1.8M)
- Monitor Connection Cable 9 ft. (3M)
- Operating Guide
- Easy Graphic Guide

#### Optional Accessories

- Monitor Connection Cable 32ft. (10M) (CBL10)
- Wall Mounting Bracket (WM20)
- Floor Stand 32" (SPD32)
- Floor Stand 42" (SPD42)

<sup>1</sup> Digital Window Features not available with RGB Inputs

<sup>2</sup> Component Input as Main Picture Only

<sup>3</sup> Screen Mode Availability Varies by Input Format

<sup>4</sup> 1024 Viewable. Due to variances in signal transmissions that would cause noise around the outer edges of the picture, not all 1080 lines are suitable for display.

HDTV Monitors display HDTV when combined with an HDTV Tuner and source.

All specifications, weights, and dimensions are subject to change without prior notice. Please access [www.hitachi.com/tv](http://www.hitachi.com/tv) for detailed specifications and dimensions for custom installations.

©2002 Hitachi Ltd. UltraVision Digital is a registered trademark of Hitachi Home Electronics (America), Inc.

dbx is a trademark of Corillon Electronics, Inc.

Digital Window and Virtual HD are trademarks of Hitachi Home Electronics (America), Inc.

SRS and TruBass are registered trademarks of Sound Retrieval Systems.