



## Configuring the Shiva VPN Client

After installing the Shiva VPN Client software on your computer, launch the client by clicking on the icon that looks like the following:



When you first run the VPN client you will be asked to enter a Username and a Password. Both Username and Password can be anything that you wish and will only be used by your local computer to open your VPN Client Configuration. You will be prompted for this password whenever you start the VPN client so make sure the password is something that is easily remembered, but not easily guessed. The login screen will be similar to the following:

The dialog box titled "Shiva VPN Client Logon" contains a red VPN icon and the text "Enter your username and password to log on." It features two input fields: "Username" with the value "James" and "Password" which is empty. There are "OK" and "Cancel" buttons. A checkbox labeled "Minimize after logon" is at the bottom left.

You will next be presented with a general configuration screen that looks like the following:

The "Tunnel Properties" dialog box has a "General" tab. It includes fields for "Tunnel Name" (containing "Name\_of\_Tunnel"), "Group" (containing "Name\_of\_Your\_Group"), "Tunnel Applies To:" (a dropdown menu showing "Dial-Up Adapter Dyn IP : 0.0.0.0"), and "Tunnel Type:" (a dropdown menu showing "Shiva Smart Tunnel (SST)"). Below these is a table for "VPN Gateway/Tunnel Server" with columns "Peer IP" and "Peer Name", containing the entry "192.168.1.1" and "VPN\_box". There are "Add..." and "Remove" buttons below the table. At the bottom, there is a checked checkbox "Enable WINS/DNS via VPN Gateway" and "OK" and "Cancel" buttons.

**Tunnel Name:** is a name that you give to your connection within the client software. You can enter any name for the tunnel in this field. (This is used to distinguish between multiple tunnels on the same computer).

**Group:** field is used to identify your level of security to the Shiva LAN Rover. The group entered in this field **must** correspond to an existing group configured on the Shiva LAN Rover.

**The Tunnel Applies To:** is the adapter that will be used for the VPN. This is usually a dial-up or network adapter.

**Tunnel Type:** is the protocol that will be used over the tunnel. (SST is default).

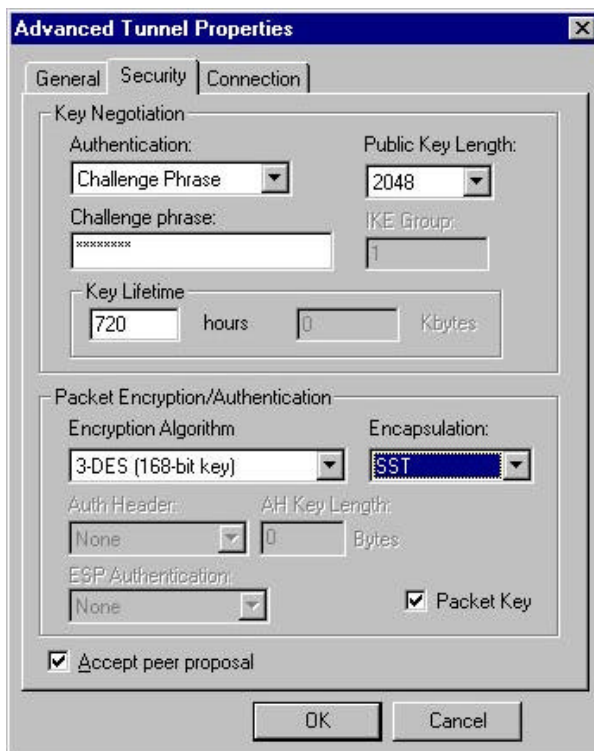
### **VPN Gateway/Tunnel Server**

This is where you enter the address of your Shiva LAN Rover. To make a new entry, click the **Add** button.

The Shiva VPN Client will now open to show you what connections are being made. All activities going to and from the Shiva LAN Rover will be visible in the bottom window. A few additional steps must be taken before the tunnel will connect for the first time. Click the tunnel that you have created with the right mouse button, and select **advanced properties** as shown in the image below.



This will bring up the **Advanced Tunnel Properties** dialog box. Select the **Security** tab, and configure the fields to match the information that you received from your network administrator as follows:



**Authentication:** is typically Challenge Phrase that you have received from your network administrator.

**Public Key Length:** must match the key length on the Shiva LAN Rover.

**Challenge phrase:** is where you will enter the phrase given to you by your network administrator.

**Key Lifetime** is the amount of time that will pass before the client will request a new encryption key from the Shiva LAN Rover.

**Encryption Algorithm** is the type of encryption that is used for the tunnel. This must match the algorithm on the Shiva LAN Rover.

**Encapsulation:** is how the data is packaged within the tunnel connection. The encapsulation type must match that of the Shiva LAN Rover.

Click the **OK** button to accept the changes to your tunnel properties.

Your VPN client should now be connecting to the Shiva LAN Rover. You can connect and disconnect the tunnel from the VPN client toolbar.



Make a note of any errors that are displayed in the main window of the VPN client software. Once the tunnel is connected, you may disconnect it by right-clicking on the taskbar icon and selecting Exit and Logoff.