

Check Point Software Technologies LTD.

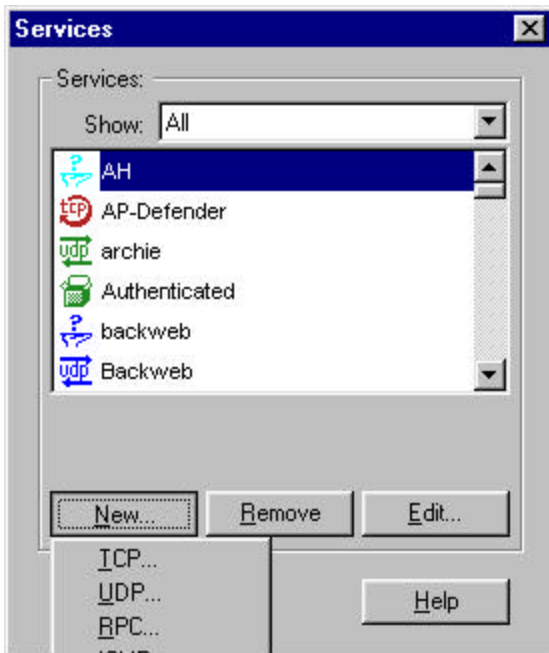
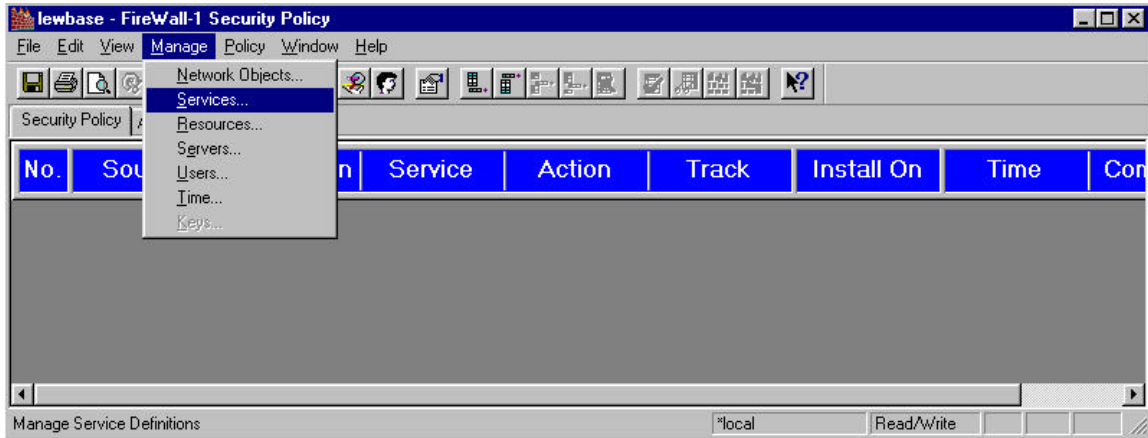
Creating A Service For Long ICMP
(Ping-Of-Death)

Creating A Service For Long ICMP (Ping-Of-Death).

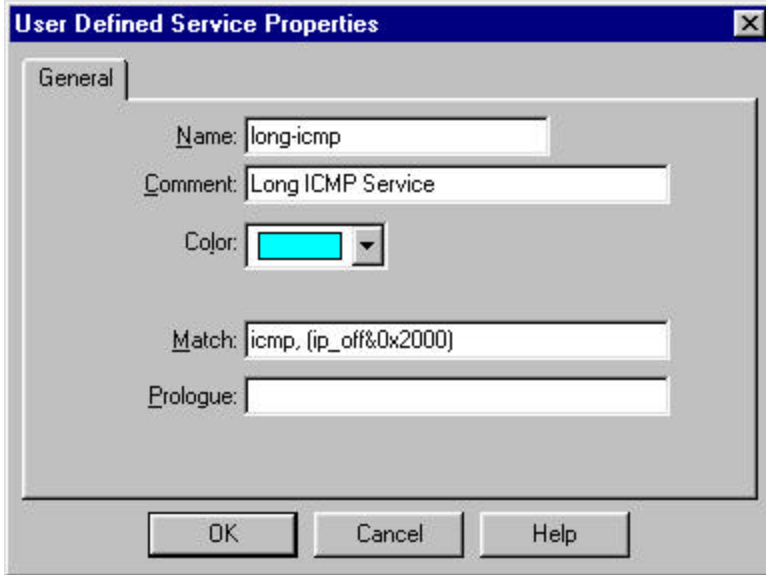
Pre revision v3.0 of Firewall-1 users must create this service and place it in a rule so that the firewall can block these long ICMP messages know as the “Ping of Death”. Although Firewall-1 v3.0 automatically filters long ICMP packets some users may want to create a service and rule for this type of traffic to facilitate alert and logging.

To create a service for long icmp to reject pings beyond 64Bytes follow this simple procedure.

1) Select **Services** drop down menu from the **Manage** drop down menu on the Policy editor screen:



2) Select **New** -> **Other** from the services dialog box:



3) Enter the service definition information:

4) Define a rule in the rule base that blocks this service in every direction:

